

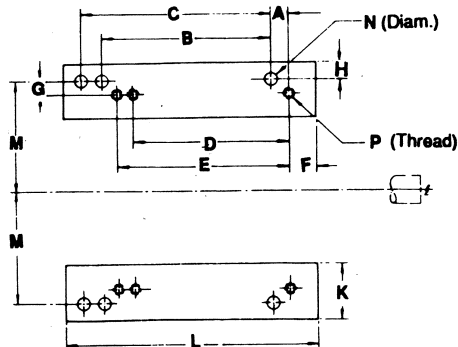


OVERLY HAUTZ COMPANY

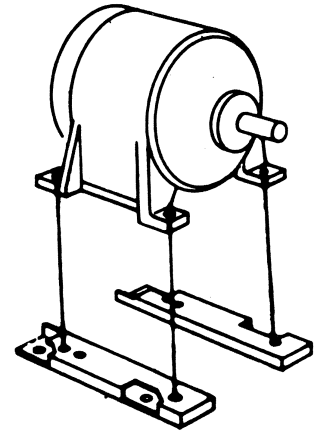
PO BOX 837 215 SOUTH WEST STREET LEBANON, OHIO 45036-0873
 PHONE 513.932.0025 FAX 513.932.1688 WWW.OVERLYHAUTZ.COM

DATA SHEET AD-6

ADAPT-O-MOUNT



adapting to the
NEMA
 "T" SERIES
 motors



Former NEMA	New NEMA	Overly-Hautz part number	O.A. height	A	B	C	D	E	F	G	H	K	L	M	N	P
404U	364T				12-1/4		11-1/4									
404U	365T				12-1/4			12-1/4								
405U	364T	40U36T	1	2		13-3/4	11-1/4		2	1	1-1/4	4	18-3/4	8	13/16	5/8-11
405U	365T					13-3/4		12-1/4								
404US	364TS				12-1/4		11-1/4									
404US	365TS				12-1/4			12-1/4								
405US	364TS	40US36TS	1	1-1/4		13-3/4	11-1/4		2	1	1-1/4	4	18	8	13/16	5/8-11
405US	365TS					13-3/4		12-1/4								
444U	404T				14-1/2		12-1/4									
444U	405T				14-1/2			13-3/4								
445U	404T	44U40T	1	2-1/4		16-1/2	12-1/4		2-1/4	1	1-1/4	4	22	9	13/16	3/4-10
445U	405T					16-1/2		13-3/4								
444US	404TS				14-1/2		12-1/4									
444US	405TS				14-1/2			13-3/4								
445US	404TS	44US40TS	1	7/8		16-1/2	12-1/4		2-1/8	1	1-1/4	4	20-1/2	9	13/16	3/4-10
445US	405TS					16-1/2		13-3/4								
444US	364TS				14-1/2		11-1/4									
444US	365TS				14-1/2			12-1/4								
445US	364TS	44US36TS	2	2-1/8		16-1/2	11-1/4		2-1/8	2	1	4-3/4	21-3/4	9	13/16	5/8-11
445US	365TS					16-1/2		12-1/4								
444U	364T				14-1/2		11-1/4									
444U	365T				14-1/2			12-1/4								
445U	364T	44U36T	2	4-3/8		16-1/2	11-1/4		2-1/8	2	1	4-3/4	24	9	13/16	5/8-11
445U	365T					16-1/2		12-1/4								
444US	364T				14-1/2		11-1/4									
444US	365T				14-1/2			12-1/4								
445US	364T	44US36T	2	0		16-1/2	11-1/4		2	2	1	4-3/4	19-1/2	9	13/16	5/8-11
445US	365T					16-1/2		12-1/4								

Information for conversions not listed available on request.

DIMENSIONS ARE IN INCHES CORRESPONDING TO LETTERS IN ABOVE DRAWING.

All units will accommodate an adjustable or stationary application.

All units, packed in cartons, are furnished with one coat of gray primer & all necessary nuts & bolts for making transitions.

(OVER)

Certification for: _____

PT. No: _____ Date: _____ By: _____

D/S AD-6