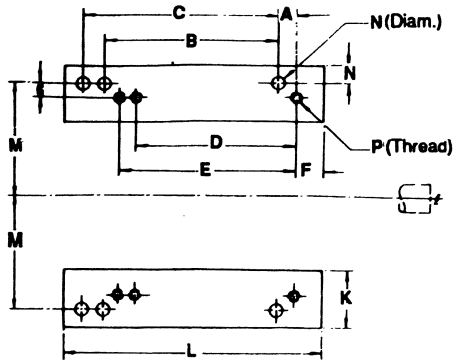




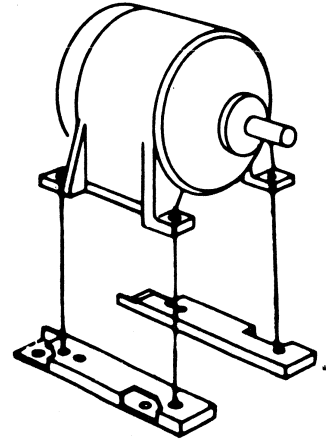
# OVERLY HAUTZ COMPANY

PO BOX 837 215 SOUTH WEST STREET LEBANON, OHIO 45036-0873  
PHONE 513.932.0025 FAX 513.932.1688 WWW.OVERLYHAUTZ.COM

## DATA SHEET AD-7 ADAPT-O-MOUNT



adapting to the  
**NEMA**  
"T" SERIES  
motors



Former NEMA	New NEMA	Overly-Hautz part number	O.A. height	A	B	C	D	E	F	G	H	K	L	M	N	P
324	213T				10-1/2		5-1/2									
324	215T	3221T	2-3/4	3-1/4	10-1/2			7	1-1/4	2	1	4	17-1/2	6-1/4	11/16	3/8-16
326	213T					12	5-1/2									
326	215T					12		7								
324	254T				10-1/2		8-1/4									
324	256T	3225T	1-3/4	1-7/8	10-1/2			10	1-1/4	1-1/4	7/8	3-3/4	16		11/16	1/2-13
326	254T					12	8-1/4									
326	256T					12		10								
364	284T				11-1/4		9-1/2									
364	286T	3628T	2	2-1/8	11-1/4			11	1-1/4	1-1/2	7/8	4-1/4	16-1/2		11/16	1/2-13
365	284T					12-1/4	9-1/2									
365	286T					12-1/4		11								
404	284T				12-1/4		9-1/2									
404	286T	4028T	3	3-5/8	12-1/4			11	1-1/2	2-1/2	1	5	20	8	13/16	1/2-13
405	284T					13-3/4	9-1/2									
405	286T					13-3/4		11								
404	324T				12-1/4		10-1/2									
404	326T	4032T	2	2-1/2	12-1/4			12	2	1-3/4	1	4-3/4	19-1/2	8	13/16	5/8-11
405	324T					13-3/4	10-1/2									
405	326T					13-3/4		12								
444	324T				14-1/2		10-1/2	12								
444	326T	4432T	3	4-1/8	14-1/2				1-3/4	2-3/4	1	5-3/4	23-1/2	9	13/16	5/8-11
445	324T					16-1/2	10-1/2	12								
445	326T					16-1/2										
444	364T				14-1/2		11-1/4									
444	365T	4436T	2	2-7/8	14-1/2			12-1/4	1-1/4	2	1-1/8	5	21-3/4	9	13/16	5/8-11
445	364T					16-1/2	11-1/4									
445	365T					16-1/2		12-1/4								

Information for conversions not listed available on request.

**DIMENSIONS ARE IN INCHES CORRESPONDING TO LETTERS IN ABOVE DRAWING.**

All units will accommodate an adjustable or stationary application.

All units, packed in cartons, are furnished with one coat of gray primer & all necessary nuts & bolts for making transitions.

(OVER)

Certification for: \_\_\_\_\_

Pt. No: \_\_\_\_\_ Date: \_\_\_\_\_ By: \_\_\_\_\_